



# Prüfbuch und Gebrauchsanleitung

*Log book and instructions for use*

## Personen- und Lastwinde *Personnel and Load Winch* IKAR PLW

*nach / acc. to Richtlinie 2006/42/EG, EN 1808:2015*

**PRÜFBUCH IMMER BEIM GERÄT AUFBEWAHREN !  
VOR GEBRAUCH ANLEITUNG SORGFÄLTIG LESEN !**

*ALWAYS KEEP THIS BOOKLET WITH THE DEVICE!  
CAREFULLY READ THESE INSTRUCTIONS BEFORE USING THIS PRODUCT!*



**Personen- und Lastwinde** nach  
RL 2006/42/EG, EN 1808:2015

**Personnel and load winch** acc. to  
RL 2006/42/EG, EN 1808:2015

Kaufdatum/  
date of purchase: \_\_\_\_\_

Datum der Erstbenutzung/  
date of first use: \_\_\_\_\_

<div style="display: flex; justify-content: space-between;"> <span style="font-size: 2em;">/</span> </div> <div style="display: flex; justify-content: space-between;"> <span><b>Position / item</b></span> <span>nächste jährliche Prüfung next annual revision Nr. - Jahr No. - year</span> </div>				
Winde montieren + ausrichten/ <i>mount + align the winch</i>				
Seil auf Beschädigungen prüfen/ <i>check cable for damage</i>				
Kurbelgewinde fetten/ <i>grease crank thread</i>				
Lagerbuchsen, Antriebswelle und Trommelnabe fetten/ <i>grease the Bushings, drive shaft and drum hub</i>				
Zahnkranz fetten/ <i>grease the ring gear</i>				
Lastbremse prüfen/ <i>check load pressure brake</i>				
Kurbelspiel prüfen/ <i>check that the crank moves easily</i>				
<i>Befestigung der Winde prüfen/ check fastening of the winch</i>				
Lesbarkeit Typenschild/ <i>readability label:</i>				
Datum der Abnahme/ Prüfer <i>revision date / checker</i>				
Grund der Bearbeitung/ <i>purposes:</i>				
Festgestellte Mängel/ <i>observed defects:</i>				



## Instructions for use

### Safety instructions



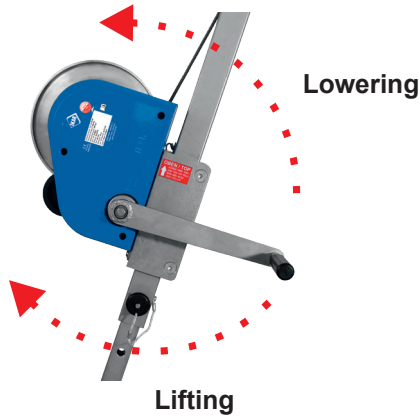
**Before use, read the entire instructions for use  
and make sure to understand its content.**

1. The IKAR Personnel and Load Winch (IKAR PLW) has been tested and certified for the lifting and lowering of persons as well as loads when used in conjunction with IKAR Cantilever Arms / Davit Arms of the type AASS and ASS as well as the IKAR Tripods of the type DB in accordance with (ZP/C023/16) acc. to RL 2006/42/EG Note: Also observe the corresponding operating and maintenance instructions of these devices.
2. Failure to follow the operating instruction(s) can be fatal.
3. For the lifting and lowering of persons in accordance with directive 2006/24/EC, additionally requires the use of an IKAR Fall Arrester with recovery mechanism according to EN 360:2002 / EN 1496:2007 of the type HRA and a IKAR fall arrest safety and rescue harness according to EN 361:2002 / EN 813:2008 of the types IK G2A/B, IK G2 A/B R and IKAR sit seat or a IK G4 DW or IK G4 DWR.
4. Using the IKAR HRA device provides a 'back up' and a rescue device should there be a problem with the IKAR PLW while working with the device – there must be a plan with rescue measures that covers all emergencies that can occur while working with the device.
5. The IKAR PLW may only be used by people that have been trained and are deemed competent. They must not must physically fit and not under the influence of any health issues (e.g. by alcohol, drugs, medication or dizziness)!
6. The IKAR PLW must not be used to hold loads in suspension.
7. Before every use of the IKAR PLW the operation of the PLW winch must be checked. Additionally the legibility of the product marking(s) must also be checked.
8. The brakes of the rope winch must be checked before every use. There must be an audible click when it is switched to "Lifting".  
Note: The minimum pulling power for a correct brake operation is: 30 daN. Without minimum load the brake does not operate.
9. Never touch the wire rope without protective gloves. If a wire rope has been damaged, it must no longer be used.
10. In case of any doubts about the safety of the IKAR PLW, it must not be used and must be presented to an authorised service agent or the manufacturer. The IKAR PLW may only be put back into operation after written approval by the authorised service agent or the manufacturer.
11. When the rope is wound up under load, a remaining capacity of 1.5 x rope diameter until the edge of the flanged wheel must be guaranteed.
12. When the IKAR PLW has a load on it 2 wraps of rope must remain on the drum.
13. Neither oil nor grease the brake mechanism!
14. When the wire rope is wound onto the IKAR PLW without any load, it must be kept under a light tension.
15. The nominal load of the winch is 300 daN for the first and last rope layer and must not be exceeded.
16. Only the IKAR VA Safety Wire Rope Ø 6 mm with a maximum length of 30 m may be used.
17. People and loads must not be lifted or lowered at the same time on the IKAR PLW.
18. Standing under suspended loads is not allowed.
19. The cable of the IKAR PLW must not be wrapped around the load.
20. If the operator cannot see the lifting or lowering of the load, communication with an observer must be established.
21. Any 'local' regulations in the use of this type of equipment must be observed.
22. The IKAR PLW must be inspected by an authorised service agent or the manufacturer at regular intervals, depending on the operating conditions, the maintenance intervals and the conditions on site. However the IKAR PLW should be subject to a maintenance/inspection at least once a year. The inspection must be documented in the log books provided. 'Local' rules must also be observed.

# ENGLISH

## Operation of the winch

1. To lift a person, turn the winding handle clockwise.
  2. To lower a person, turn the winding handle counter clockwise.
- Note:** Observe the arrows on the housing.
3. To position a person where needed, simply let go of the winding handle.  
An integrated automatic brake keeps the winding handle from turning back.



### Maintenance intervals

- In the case of continuous operation with up to 100 % of the nominal load of 300 kg:  
after 1000 m hoisting and lowering.
- In the case of continuous operation with up to 50 % of the nominal load of 150 kg:  
after 2000 m hoisting and lowering.
- **but at least every 12 months**

**The maintenance work may only be operated by certificated persons in accordance with the IKAR maintenance manual:**

### Between these intervals, carry out the following checks

- Check that the crank moves easily.
- Check that the ratchet latches in.

# ENGLISH

## Troubleshooting

### **Note:**

Any maintenance work that becomes necessary has to be reported immediately and a certificated person or technical expert has to execute all required repairs.

Fault	Cause	Solution
Person is not stopped	<ul style="list-style-type: none"><li>• Rope not inserted correctly, turned the wrong way when hoisting</li><li>• Brake worn or defect</li><li>• Brake disc wet or oily</li></ul>	<ul style="list-style-type: none"><li>• Insert rope correctly</li><li>• Let an expert check the brake components and replace worn parts</li><li>• Let an expert clean or replace the brake discs</li></ul>
Load pressure brake cannot be released	<ul style="list-style-type: none"><li>• Brake disc mechanism or brake discs interlocked - or crank is jammed</li></ul>	<ul style="list-style-type: none"><li>• With the palm of the hand hit the crank arm lightly to loosen the brake in the direction for lowering - without load!</li><li>• (If necessary, block gear wheels until the crank becomes loose; grease crank threading)</li></ul>
Load pressure brake does not close (load is not stopped)	<ul style="list-style-type: none"><li>• Crank was not fully screwed on during mounting and consequently interlocked with the hex screw</li></ul>	<ul style="list-style-type: none"><li>• Loosen the hex screw, fully screw on the crank, fasten the hex screw, check the crank clearance (min. ¼ turn to the left without moving drive shaft)</li></ul>

# ENGLISH

## Application examples

Approved supporting structure acc. to directive 2006/42/EC  
and DIN EN 1808:2015 for the personnel and load winch IKAR PLW.

### IKAR Tripod Type DB-A2



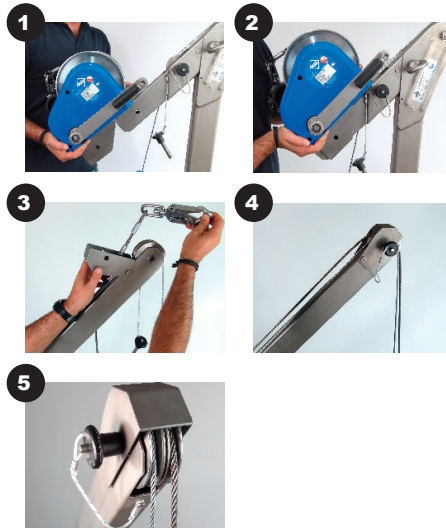
Application example with IKAR Tripod Type DB-A2



### IKAR Cantilever arm Type ASS-1



Application example with IKAR Cantilever arm Type ASS-1





**EC Declaration of Conformity**  
for machines acc. to directive 2006/42/EG

The manufacturer

IKAR GmbH  
Nobelstraße 2  
Industriepark West  
D – 36041 Fulda

hereby declares that the new machine described hereafter

manually operated winch type  
**PLW**


for the lifting and lowering of persons and loads

is in conformity with the provisions of EC directive 2006/42/EG  
and identical with the machine which is subject of the  
EC type examination certificate no.

**ZP/C014/16**

issued by  
DEKRA EXAM GmbH, Dinnendahlstraße 9, 44809 Bochum  
dated October 2016.

Fulda, 01.10.16

  
Otto Herchet  
IKAR GmbH

**IKAR-GMBH**  
NOBELSTR. 2  
D-36041 FULDA  
TEL: 0661/22050  
FAX: 0661/21842



RAIFFEISENBANK  
HAIMBACH eG  
BLZ: 530 620 35  
KONTO: 5701210

POSTBANK  
KÖLN  
BLZ: 370 100 50  
KONTO: 250294-501



**GESCHÄFTSFÜHRER**  
OTTO HERCHET  
5 HRB 717 Amtsgericht Fulda  
USt.-Id.-Nr. DE 112402131  
St-Nr.: 018 82700901



**Hersteller / Manufacturer:**

IKAR GmbH  
Nobelstrasse 2  
36041 Fulda / GERMANY

Tel.: +49 (0)661 22050  
[www.ikar-gmbh.de](http://www.ikar-gmbh.de)  
[kontakt@ikar-gmbh.de](mailto:kontakt@ikar-gmbh.de)

**Überwachung durch/controlled  
and audited by:**

**Prüf- und Zertifizierungsstelle  
des FA PSA  
D-42781 Haan / GERMANY**

**CE0299**