

SPECIFICATION SHEET

BTS PRO-6G Davit, Bases & Accessories



PRODUCT FEATURES

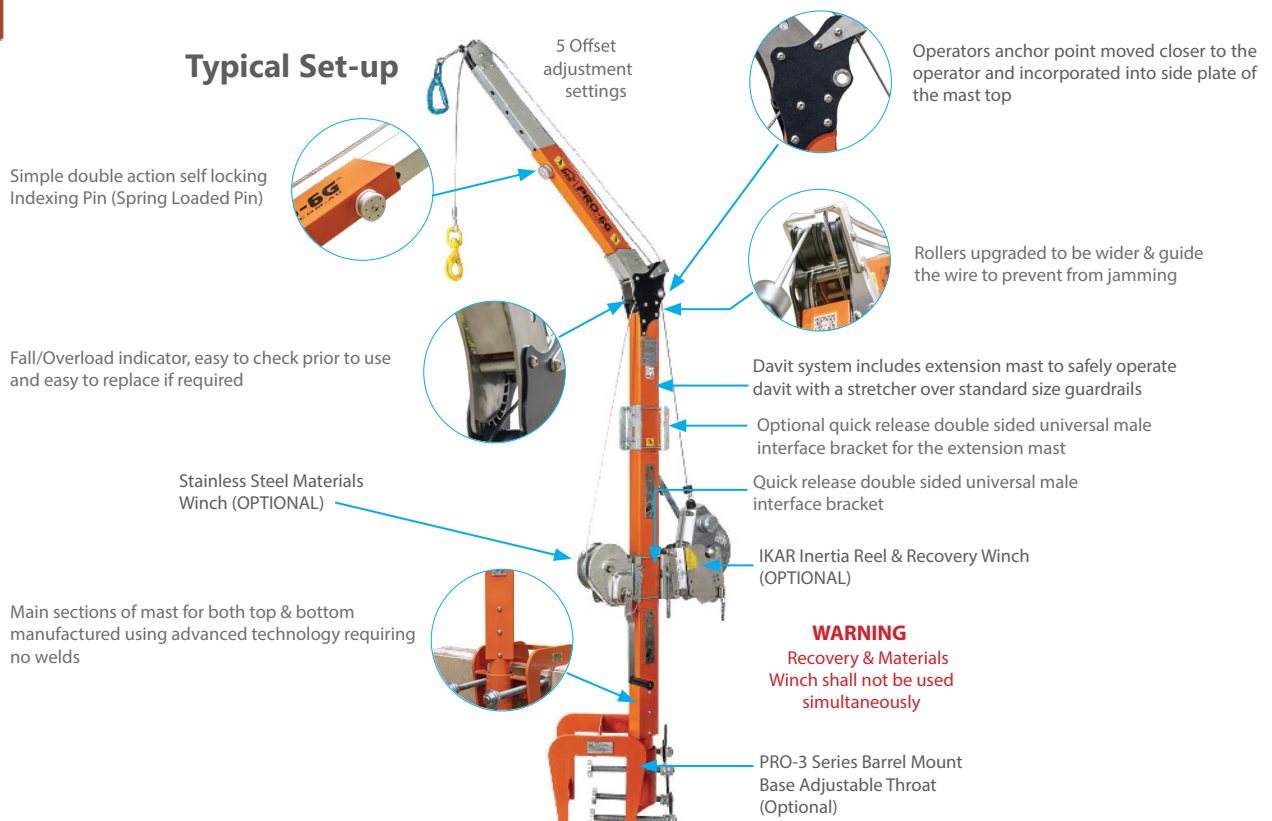
- Manufactured using 6061-T6 Aluminium.
- Powder-coated with AkzoNobel Interpon D610 advance coating.
- Modular construction of up to 4 pieces allowing for ease of transport and storage.
- Stainless steel CNC machined fail-safe device with mechanical fuses.
- 5 Offset adjustment settings from 0.5m (1.64 ft) to 0.75m (2.46 ft) with double action self locking indexing pin.
- No special tools required for assembly or disassembly.
- Suitable for both man and material lifting/lowering applications.
- Maximum rated capacity 140kg (310 lbs) material handling.
- Primary anchor is Man rated to 140kg (310 lbs) including all tools and clothing.
- Secondary anchor is man rated 140kg (310 lbs) (anchor point for winch operator).
- Suitable for use in both permanent and portable davit bases.
- Swivel 360 degrees.
- Quick connect winch interface bracket.
- Self locking Indexing Pin (Spring Loaded Pin) arrangement allows for quick and easy adjustment and locking of offset at different set intervals.
- No specialist tools required to repair the system after a fall or overload has occurred.
- Use of the in-line 0.6m (1.96 ft) mast extender allows for ease of positioning rescue stretchers over obstacles like guardrails.
- Patented System.

SPECIFICATIONS

Ultimate Strength Rating:	Jib: 15kN (3372 lbs). Mast: 22.2kN (5000 lbs).
Capacity: Maximum number of users:	Max. 2 users, 1 person no more than 140kg (310 lbs) per anchor point.*
Allowable MAF/AAF for SRL/SRD:	6 kN (1,350 lbs).
Reach (5 Offset settings)	0.5m (1.64 ft) to 0.75m (2.46 ft).
Height:	Max: 2.79m (9.15 ft) Min: 1.96m (6.43 ft).

* Capacities quoted when used in conjunction with a man rated winch

Typical Set-up



SPECIFICATION SHEET

BTS PRO-6G Davit, Bases & Accessories



PRO 6G DAVIT BASES

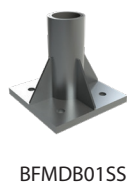
The PRO-6 Series Portable Bases are for rugged and demanding applications.



PORTABLE DAVIT BASES	
Description	Code
PRO-6G Portable Base.	30075
PRO-6G Bolt-On Flange Base.	30181
PRO-6G External Tank Collar Base.	30189
PRO-6G Plus Hitch mount base.	30076
PRO-6G Counterweight base.	30077
PRO-6G I-Beam Clamp-On Sleeve 90mm (3.54 in) - 280mm (11.02 in).	30165
PRO-6G Barrel Mount Base Adjustable Throat 30mm (1.18 in) - 620mm (24.40 in).	30029
PRO-6G Barrel Mount Base Adjustable Throat 20mm (0.78 in) - 205mm (8.07 in).	30166R
PRO-6G Sheet Piling Mount Base Adjustable Throat (0mm - 25mm).	30168S



DAVIT PERMANENT BASES		
Description	Material	Code
Core Mount Flush Mount.	Stainless Steel	BFMDB03SS
Flush Mount for wet concrete insert mounting.	Hot Dip Gal (MS)	BTS0026F
Floor Mount Davit Base with Screw locking pin.	Hot Dip Gal (MS)	BTS1109
Floor Mount.	Hot Dip Gal (MS)	BTS0025
Heavy Duty Floor Mount.	Stainless Steel	BFMDB01SS
Wall Mount 4 point.	Hot Dip Gal (MS)	BTS0024
Wall Mount 4 point.	Stainless Steel	BFMDB02SS
Davit Base Cap. To prevent build up of water and debris.	Stainless Steel	30069



SPECIFICATION SHEET

BTS PRO-6G Davit, Bases & Accessories



PRO-6G DAVITS			
Model Description	Reach (m)	Height (m)	Part No.
PRO-6G Davit - 2.79m 4 piece c/w Quick Release Double Sided Universal Male Interface Bracket	0.5 to 0.7m	1.96to 2.79	50506

PRO-6G DAVITS SPARE PARTS	
Model Description	Part No.
PRO-6G Davit - Section Boom	50506B
PRO-6G Davit - Section Top Mast	50506C
PRO-6G Davit - Section Mast Extension	50506D
PRO-6G Davit - Section Bottom Mast	50506E
Quick Release Double Sided Universal Male Interface Bracket	60202UA

PRO-6G DAVITS ACCESSORIES	
Model Description	Part No.
Female Single Uni Interface Davit Winch Bracket	60202UF
IKAR Rescue Winch Bracket c/w Female Single Interface Brackets	60202UI
BTECH Man / Materials Rated Winch 18, 30, 45, 60, 76 & 90m wire rope	<i>See page 34</i>
S/S Man Rated Winch c/w Female Interface Bracket with 18m x 6mm 7x19 H.D.G Grade G1970 Wire rope with Double Action Swivel Safety Hook c/w Fall Arrest Indicator	SSJC-C820M
S/S Material Winch c/w Female Interface Bracket with 18m x 6mm HDG W/R with G80 Swivel S/L HK	SSJC-C820
S/S Material Winch c/w Female Interface Bracket with 18m x 6mm S/S W/R with G100 Swivel S/L HK	SSJC-C820S
IKAR Recovery Winch 12, 18 or 24 metre	HRA-12TA, HRA-18TA HRA-24TA
Aluminium Equipment Storage Box for PRO-3G Davit 30106	30206
Aluminium Equipment Storage Box for PRO-3G Davit 30107 & 30108	30207
BTECH Storage/Carry Bag	40003B



SPECIFICATION SHEET

BTS PRO-6G Davit, Bases & Accessories



FLEXBASE

Engineered for flexibility and reliability, this innovative compact davit base adapts to your operational needs, enabling seamless performance in construction, maintenance, and rescue activities. With easy setup, and robust construction, the BTS Flex Base Davit System is designed to allow you to quickly and securely carry out your lifting, confined space & working at heights tasks.

SPECIFICATION

This equipment is considered as part of a personal fall arrest system (PFAS) with a maximum capacity of 2 users at 136 kg each. It can also be used (not concurrently) for materials handling with a maximum working capacity dependant to specific davit used.

MATERIAL & CONSTRUCTION

Welded Base unit: STEEL (H.D.G. Dip Spin)
Leg Assembly: Aluminium 6061-T6 & Steel
Sleeve bearing: PVC.

SERVICE TEMP

-23°C (-10°F) Min

WEIGHT

(est.) 34kg (75lb)

USAGE & RESTRICTIONS

- For use with the Pro-3G and Pro-6G davit.
- Independent leveling function on each leg for uneven ground up to 3°.
- Allows 360° slewing when legs fully extended.
- Adjustable settings for tighter workspace.
- Weight 34kg (75lb), however the unit can be broken down to individual components weighing under 7kg (15lb) each.
- Telescopic leg extrusion for compact transportation size.
- Tool-free assembly through the use of ½ inch securing pins.
- Front legs adjustable in angle for reduced footprint in tighter work sites (Note this will impact 360° slew ability).
- Rear legs adjustable in extension for reduced footprint in tighter work sites (Note this will impact 360° slew ability).
- This davit base is designed to be used in combination with other equipment from the BTS range and/or any other equipment from other manufacturers that the installer has received approval in writing from BTS.
- Anchorage hardware must be installed by qualified and experienced personnel.
- The installer must follow the anchorage hardware manufacturers recommendations at all times.
- In the occurrence of a fall or if the safety of the equipment is in doubt, equipment must be removed immediately from service and inspected by qualified and/or competent personnel.
- This equipment must always be operated in a level position.
- Tested to: AS/NZS 5532:2013, ANSI Z359.18:2017 & OSHA 1910 & 1926 When used in a complete system.
- Periodic inspections of hardware must be done.
- In the occurrence of a fall or if the safety of the equipment is in doubt, equipment must be removed immediately from service and inspected
- This equipment must always be operated in a level position.



Supplied in reusable steel stillage complete with lifting eye's & forklift pockets for ease of storage & transport

Flex base shown with BTS PRO-6G Davit, Stainless Steel Material winch & IKAR SRL & Rescue winch (not included)



SPECIFICATION SHEET

BTS PRO-6G Davit, Bases & Accessories

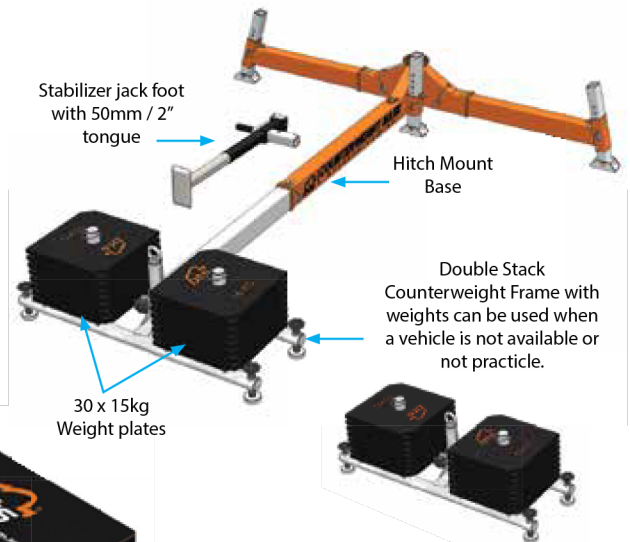


VEHICLE HITCH MOUNT / COUNTERWEIGHT DAVIT BASE

The BTS PRO-6 Series Hitch Mount and Counterweight Base Davit system is your ultimate solution for height safety, fall arrest, leading edges and confined space entry and retrieval applications such as manholes, silos and pump stations. The PRO-6 Series Portable Hitch Mount Bases are designed for rugged and demanding applications using external weight sources to anchor the davit system.

FEATURES

- Easy assembly, no tools required.
- Versatile, counterweighted base or attached to a vehicle with 50mm/2" hitch square receiver.
- Adjustable hitch mount height 340mm (13.3") – 710mm (28.0").
- Set up on uneven ground with independently adjustable support legs.
- Base can be rotated from the vehicle hitch up to 90° on either side.
- Full 360° rotation of Pro-6G davit for access and retrieval of workers or goods.
- Storage bag for easy transportation and storage.
- Separates into easy to carry components.
- Rated lifting point on the counterweight frame.



Standards: when used in a complete system

- OSHA1926.502 and 1910.140.
- ANSI Z359.18
- AS/NZS 5532 & 1891.4

Capacity: when used in a complete system

- Fall Arrest: Up to 2 users 140kg (310 lbs) each.
- Work positioning: Up to 2 users 140kg (310 lbs) each.
- Rescue retrieval: Up to 2 users 140kg (310 lbs) each.
- MRC / WLL / Load: 140kg (310lbs) Max.

2 USERS = 1 in pit & 1 operating winch

Counterweight base attachment for 30076S with Weight plates (30077k)

- Weight: Total 465kg (1025lbs)
- Separates into easy to carry components: Weight plates 30x 15kg (33lbs) with Counterweight frame (18kg).
- Material specifications:
 - Steel (Galvanized / Painted / Electrophoresis coating / Rubberized coating)
- Shipping dimensions:
 - Length: 1.07m (42") – Width: 0.36m (14") – Height: 0.42m (17")
 - Weight: 465kg (1025lbs)

Also available with stacking stillage for multiple units.

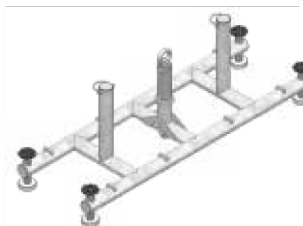
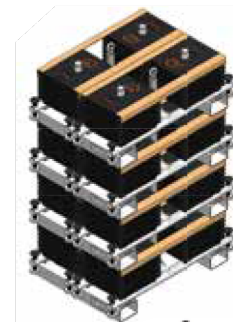
PRO-6G Series Hitch mount base. (30076)

The PRO-6 Hitch mount davit base allows the user to connect to their vehicle and use its weight and stability as a counter weight.

- Weight 28kg (62 lbs).



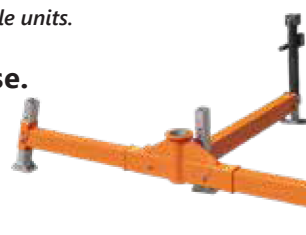
30 x 15 KG / 33 LBS Weight Plates



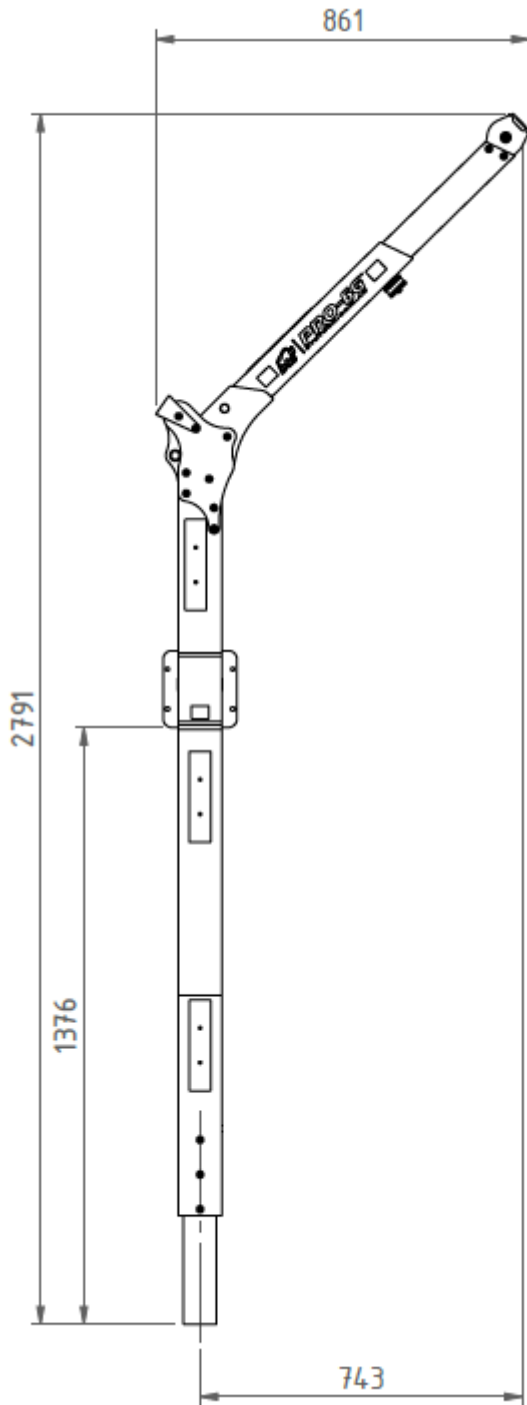
Counterweight Base



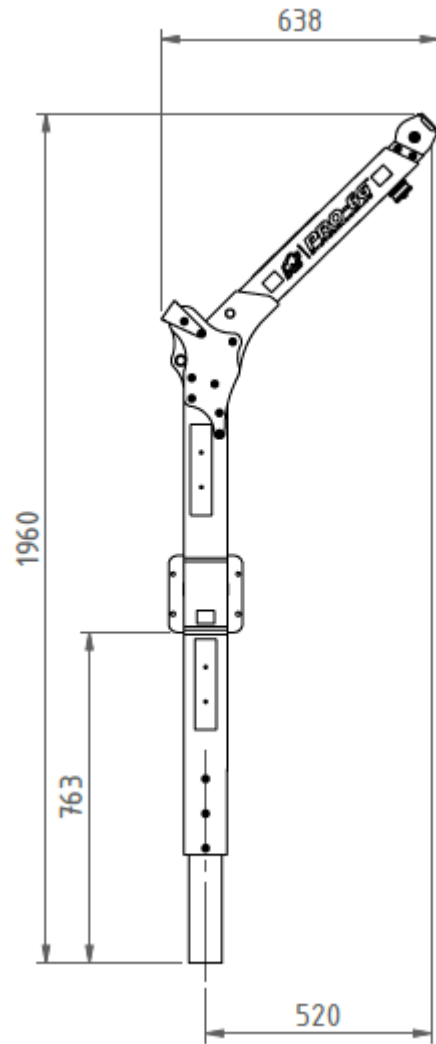
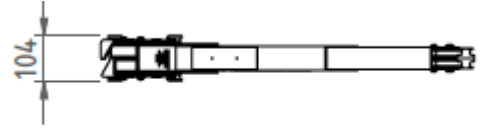
Complete unit



SPECIFICATIONS



Max Height & Offset Extension



Min Height & Offset Extension