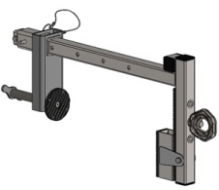
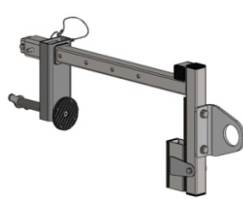
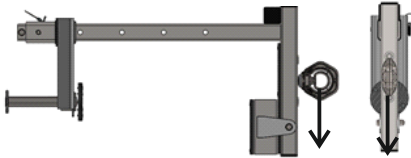
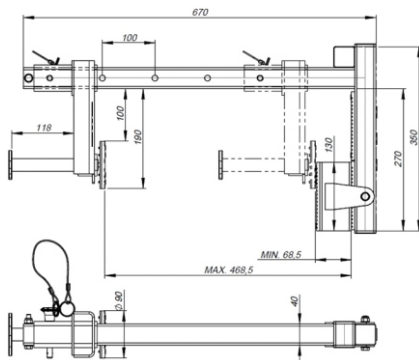
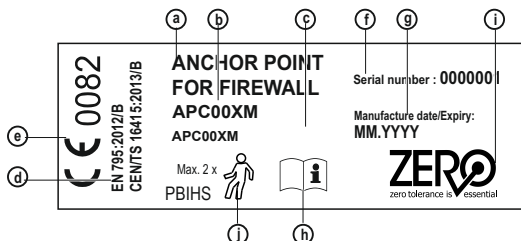
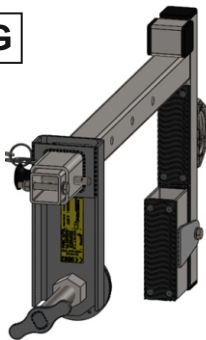
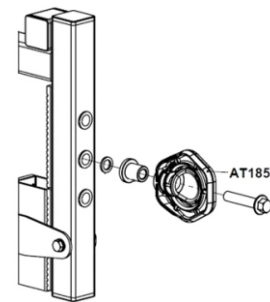
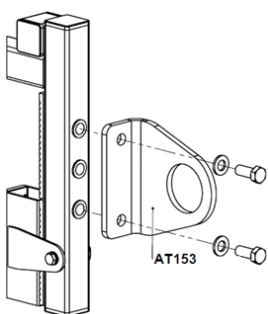
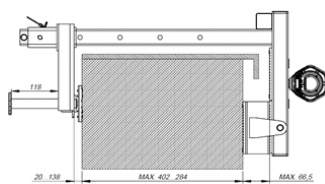
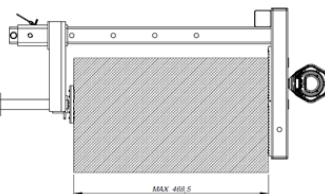


A

ZERO
zero tolerance is essential
CE 0082
EN795/B
TS 16415/B

PBHIS

APC00XM**EN ANCHOR POINT FOR FIREWALL****B****C****D****E****F****G****H****I****J****a****b**

EN - NOTE: Before use of this device please read and understand this instruction manual.

A. GENERAL DESCRIPTION

Anchor point for firewall APC00XM in combination with anchor point AT185 or AT153 forms an anchor point conforming with EN 795/B and TS 16415/B. The device is designed for protection of maximum 2 users at the same time. The device is made of galvanized steel. The device comprises frame (APC00XM) and anchor points (AT185 or AT153). Frame (equipped with rivet nuts) and anchor points are connected using bolts M12 (required use of wrenches #19). Weight of complete device is approx. 10.5kg. Strength of device is min. 13kN vertically down. Maximum load that could be transmitted in service from the device to a permanent structure – 9 kN.

If the device is used as a part of a fall arrest system, the user must be equipped with an element limiting maximum dynamic forces applied on user while arresting a fall to max. 6kN.

Complete device comprises:

- 1) Frame APC00XM with fixed-mounted slider. The frame is equipped with rivet nuts for installation of anchor points.
- 2) Anchor point:
 - A) AT185 – swivel anchor point with fall indicator. Mounted with one bolt M12 on the frame. Installation hole Ø34mm.
 - B) AT153 – anchor point with large attachment point. Mounted with two bolts M12 on the frame. Installation hole Ø60mm.

B. OVERVIEW OF APC00XM+AT185**C. OVERVIEW OF APC00XM+AT153****D. PERMISSIBLE DIRECTIONS OF LOAD OF ANCHOR POINT****E. DIMENSIONS OF FRAME OF DEVICE****F. MARKING OF DEVICE**

- a) Name/ type of device
- b) Device model designation.
- c) Reference number.
- d) Number/year/class of European standard.
- e) CE mark and number of notified body which supervises the production of the equipment.
- f) Month and year of manufacture/expiry date
- g) Serial number of device.
- h) Attention: read instruction manual.
- i) Mark of device's manufacturer or distributor.
- j) Maximum number of concurrent users

TWO OPTIONS:

- APC00XM + AT185 – ref. no. APC00XM-185-000
APC00XM + AT153 – ref. no. APC00XM-153-000

G. LOCATION OF MARKING OF DEVICE**H. INSTALLATION OF ANCHOR POINT AT185**

Anchor point AT185 can be mounted on the frame APC00XM as shown in the following diagram. The installation will require use of wrench #19. Use as follows:

- a) NordLock washer M12.
- b) Spacer of anchor point AT185.
- c) Anchor point AT185
- d) Hex washer head screw M12x60 (ISO 4162).

I. INSTALLATION OF ANCHOR POINT AT153

Anchor point AT153 can be mounted on the frame APC00XM as shown in the following diagram. The installation will require use of wrench #19. Use as follows:

- a) Anchor point AT153
- b) Two washers M12-A2-80.
- c) Two hex head screws M12x30 (ISO 4017).

J. INSTALLATION ON FIREWALL

The device can be installed easily on firewalls with flashings.

The frame is equipped with movable slider which can be set in one of five positions (every 100mm). The slider has set screw which should be finally tightened while pushing the frame on the structure.

The device can be installed on:

- a) Firewall with flashing – max. 468.5mm
- b) Firewall without flashing – max. 537mm

Maximum dimension of flashing: 70mm.

K. PERIODIC INSPECTIONS

At least once a year, after every 12 months of use, it is necessary to carry out periodic detailed inspection of the device. Periodic inspection may be carried out by a properly qualified and skilled person. Conditions of the device's use may influence the frequency of periodic inspections which may be carried out more than once a year. After 5 years of use, it is recommended that periodic inspections are carried out by the manufacturer of the equipment or an entity authorised by the manufacturer to carry out such inspections. All periodic inspections must be recorded in the identity card for the device.

L. MAXIMUM TIME OF USAGE

Maximum time of usage of correctly operating devices is unlimited.

NOTE: Maximum time of usage depends on intensity and environment of use. If the device is used in heavy conditions, being exposed to frequent contact with water, sharp edges, extreme of temperatures or exposed to corrosive substances, it may be necessary to withdraw the device after only one use.

Ł. WITHDRAWAL FROM USE

The device must be withdrawn from use immediately and destroyed if it has been used to arrest a fall, or failed a periodic inspection or there are any doubts concerning its function.

M. THE ESSENTIAL PRINCIPLES FOR USERS OF PERSONAL PROTECTIVE EQUIPMENT AGAINST FALLS FROM A HEIGHT:

- personal protective equipment shall only be used by a person trained and competent in its safe use.
- personal protective equipment must not be used by a person with medical condition that could affect the safety of the equipment user in normal and emergency use.
- a rescue plan shall be in place to deal with any emergencies that could arise during the work.
- being suspended in PPE (e.g. arresting a fall), beware of suspension trauma symptoms.
- to avoid symptoms of suspension trauma, be sure that the proper rescue plan is ready for use. It is recommended to use foot straps.
- it is forbidden to make any alterations or additions to the equipment without the manufacturer's prior written consent.
- any repair shall only be carried out by equipment manufacturer or his certified representative.
- personal protective equipment shall not be used outside its limitations, or for any purpose other than that for which it is intended.
- personal protective equipment should be a personal issue item.
- before use ensure about the compatibility of items of equipment assembled into a fall arrest system. Periodically check connecting and adjusting of the equipment components to avoid accidental loosening or disconnecting of the components.
- it is forbidden to use combinations of items of equipment in which the safe function of any one item is affected by or interferes with the safe function of another.
- before each use of personal protective equipment it is obligatory to carry out a pre-use check of the equipment, to ensure that it is in a serviceable condition and operates correctly before it is used.
- during pre-use check it is necessary to inspect all elements of the equipment in respect of any damages, excessive wear, corrosion, abrasion, cutting or incorrect acting, especially take into consideration:
 - in full body harnesses and belts - buckles, adjusting elements, attaching points, webbings, seams, loops;
 - in energy absorbers - attaching loops, webbing, seams, casing, connectors;

